

America's Tiniest Newspaper



ALPINE SUN



Best Climate in US by Govt. Report.

VOL. 13. No. 7. (313) ALPINE, CALIF. FRIDAY, APRIL 3, 1964 10¢

Midget Racetrack is Started

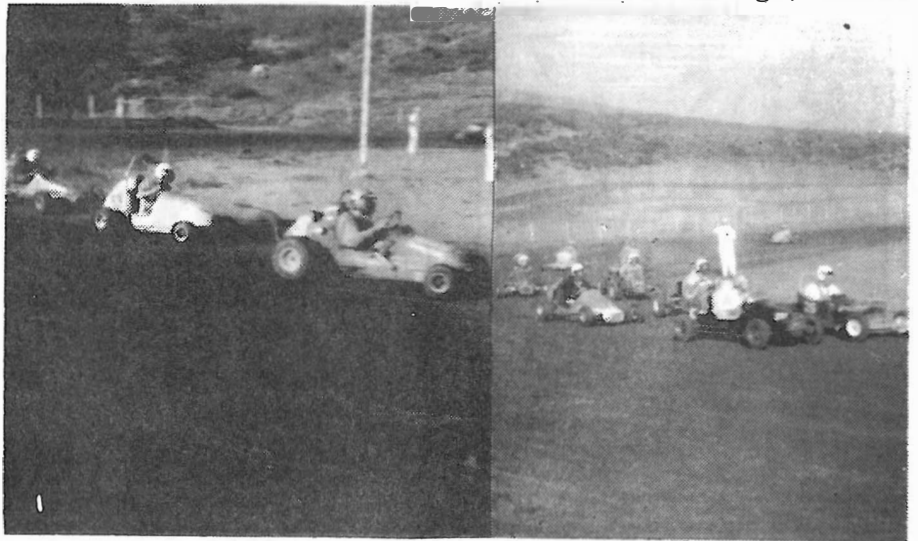
Boney as Supervisor

At 2:30 today, headquarters for the Henry Boney for Supervisor campaign committee opened its office, 830 1/2 La Mesa Blvd., at Palm, in LM, says Ron Fuller, special assistant to the well known markets man.

Vice Adm. C.E. Ekstrom,

TINY GRANDSTAND FILLED AT SUNDAY'S FIRST RACE

Alpine's famous climate now has a running mate for national publicity, a microcar racetrack, which staged its first thrilling events Sunday. A crowd of 150 was on hand to see the roaring midgets skid around the dirt course which is above Lutz's Garage, Hwy 80



USN ret. and P.N. Hyndman, of the SD County Board of Education, were named co-chairmen of the committee. Boney is proud, he said, 'to have such distinguished leaders to head my campaign'.

Boney has a lively campaign idea-- 'Plan for Prosperity', which is taking on real well. He says 'SD County can't wait for new industrial plants.

at Tavern Road.

It is owned and operated by the Alpine Micro Racing Club, with a local man, as one of the prime movers. He is Larry Wilcox, secretary-treasurer. President is Bob Brown, of SD, with Ken MacLean, of San Carlos, as vice-president. The club was founded in 1957 in SD, now has its track permanently here.

'The first races Sunday were warmups for points,

MORE ON 22

MORE ON 22

MARKES HAS A MILESTONE

His many friends have been congratulating Joe Markes on his 85th birthday Wednesday. He is enjoying fine health, looks about the same as he did 10 years ago, one chap remarked. Joe lives with his wife on South Grade Road, keeps up his physical fitness in garden work.

EL CAJON THEATRE

444-3272

NOW THRU TUESDAY
YUL BRYNNER
GEO. CHAKIRIS
'KINGS OF THE SUN'
PANIVISION & COLOR
PETER LAWFORD
BETTE DAVIS
'DEAD RINGER'

AERO DRIVE-IN

BOSTONIA 444-8800

NOW THRU TUESDAY
ADULT FAN-FAIR
BLISTERING FEATURES
'COMMON LAW WIFE'
'WALK ON WILD SIDE'

swapmeet weekly, 9 to 5
Sat. 35¢ & 50¢ per car
Sun. 50¢ & \$1 per car

Your Complete Fashion Specialty Shops

*Famous Brands

*Extended Credit

Evelyn
WIGTON'S
smart apparel

EL CAJON - LEMON GROVE - NATIONAL CITY - PACIFIC BEACH - COLLEGE GROVE - CENTER

Horseshow Tomorrow

Everything is all go for the Pequeno Riders' first horseshow tomorrow at the Irvine Ranch Ring, 2229 Tavern Road. Events start at 1 and all members are ready for the contests which carry nice trophies and ribbons, all donated by public spirited Alpiners Bob Alcorn, well known horse shoer will be the judge and everyone is invited. (See Top Talk column for details).

Reopen Bus Agency

A.E. Alder, who formerly ran a fixit shop and was Greyhound Bus agent here, upon returning from the east was drafted by V.R. McClure, manager in SD, to reopen the agency here. It is now at Alpine Cleaners, 2251 Hwy 80, and is serving Alpine travelers. The Alders live in a big trailer at Alpine Oaks Mobil Estates.

LEWINSON FROM HOSPITAL

A short stay in the hospital was necessary for Cecil Lewinson, pioneer Alpiners, who has been suffering from emphysema, a bronchial condition, reports his wife, Lois. One advantage over that ailment he has is that he quit cigarettes.

FLORENCE'S MARKET

FOOD SPECIALS FRIDAY THRU WEDNESDAY

KOSHER STYLE, BRISKIT

5 TO 6 LB. AVERAGE

CORNERED BEEF 59¢ Lb.

NEW CROP SOLID HEAD

CABBAGE 2 lbs. 9¢

CARROTS 1 LB. CELLO BAG 2/19¢

IMPERIAL 20 OZ.

STRAWBERRY JAM 2/79¢

VAN CAMP'S

PORK & BEANS 4/99¢

DOLE'S SLICED

PINEAPPLE NO. 2 CAN 3/99¢

NEW, IMPROVED, BETTY CROCKER

CAKE MIX WHITE OR CHOCOLATE 39¢



**COLD BEVERAGES
BEER, WINE, LIQUOR**

ED ROWAN, Manager

2262 Hwy 80

Alpine

445-2436

EDITORIAL

Foreign Aid Money Should be Alaskan Aid!

As we have said many times, and discussed with good American citizens, foreign aid is something that should be put up to the voters, the people who have to dig deeply to pay taxes for this money that is spent abroad without their consent.

Perhaps this is the right time for the country to object strongly to the government, and at the same time suggest, nay, urge, that we take care of our young state Alaska in its hour of dire tragedy and economic necessity.

While President Johnson is busy on disaster aid from domestic funds in the budget, we think it is time that he and congress cut

down on foreign aid and make it domestic aid-- for Alaska, also for Crescent City--and help our brothers get back on their feet.

The federal disaster appropriation is only \$20 million, perhaps large enough for an average season, but this Alaskan tragedy is far more than average and it needs immediate and unstinted help.

Let us make this a real United States of America and not a split up bunch of foreign states bleeding us to penury. Johnson's 'War on Poverty', should be waged right in congress to stop the flow of hard-earned money out of this country. -CI

ALPINE SUN

America's Tiniest Newspaper

445-2415 OR 445-2394

2255 Tavern Rd. Mail Rt. 1, Box 189

ALPINE, SAN DIEGO COUNTY, CALIFORNIA

PUBLISHED SEMI-MONTHLY ON FRIDAY

10¢ PER COPY. BY MAIL, \$2. YEARLY

CLARKE IRVINE, EDITOR & PUBLISHER
AOPA 194347

ALICE IRVINE, ART & COMPOSITION
OWNED BY HEALTH DEFENSE LEAGUE INC.

PRINTED AND PRODUCED ENTIRELY ON THE RANCH

All paid. Second class mail privileges authorized at Alpine, California.

EST. JAN 1952. ADJUDGED FOR LEGAL ADS ON 11-12-59. IN SUPERIOR COURT. NO. 238120.

McKie Realty

2355 Hwy 80 445-2217

P.O. Box 398 Alpine

Elsie Hoffman, Associate
'Before You Sell or Buy See McKie'

COMPLETE FENCING

CHAIN LINK - REDWOOD - BLOCK WALLS

American Fence Co. 327 Cypress Lane, El Cajon, 442-3396

PRIZES VALUABLE PHOTO

Nellie Keller, former Alpiner, says she has just received an autographed picture from the Astronauts, with whom she was photographed when the seven visited Astronautics where she was then working. They apologized for the delay caused by some of them moving, but now she has it, it is a highly prized possession.

BAPTISTS PLAN REVIVAL

The First Baptist Church of Alpine has slated a big revival at its edifice, 3500 Hwy 80, starting Sun. April 12 at 7:30, to continue nightly till the 19th. The Rev. Wm. Bates of EC will be speaker. The public is invited.

PASTEL COLORS
PHOTOGRAPH
WHITE, SO
THIS TRUCK
OF BRIGHT
EASTER EGGS
ALL LOOK
WHITE. THEY
WERE BEING
LOADED INTO
WINDMILL
DRIVE IN BY
MRS. ED
ZIMMER, WHO
REPORTS
SELLOUT ON
NEW IDEA,
OFFERING
COLORED
EASTER EGGS.



Dick Harmer, oldest son of the Jerry Harmers, operators of Florence's Market, with his wife Edith and their two young sons spent the week-end here, driving down from Arcata. On the way they enjoyed Disneyland for a day.

Dr. Frank J. Bornowski, D.C.

Better Health Thru Chiropractic

445-2169 1981 Arnold way
Closed Wed. Alpine, Calif.

SUNDAYS & HOLIDAYS BY APPT.

SPECIALS

of the MONTH



10% Off On Products Below--

Cooke's Sprays, Insecticides & Fungicides
Liquinox Liquid Fertilizers
Vitabark Soil Conditioner & Ground Cover,
Wil-Gro Fertilizers: Bloodmeal, Bonemeal,
Dichondra Feed, Rose Food, Planter Mix,
Steer Manure & Peat Moss.

For Pipes, Fittings, Plumbing Supplies & Information Call

AL HINKLE LUMBER

2101 Hwy 80

Alpine

445-2184



RELATION AT PROGRESS OF HATCH CHEVROLET IN EC IS SEEN ON FACES OF CIVIC LEADERS. FROM LEFT; ROY WEAR, SALES MANAGER, CLARKE HATCH, CHUCK FERREE, C OF C MANAGER, AND ART DECKER.



GROUP OF EC BUSINESSMEN AND CHEVROLET EXECUTIVES AID CLARKE HATCH BREAK GROUND FOR ADDITION TO HIS BUSY AGENCY THURSDAY. FROM LEFT; BUILDER FRED HUNT, MARVIN WILLIAMS AND GENE HOGAN, OF CHEVROLET; MAYOR LLOYD LOFTUS, HATCH, CHUCK FERREE, BILL MARTIN, C OF C PREXY; ELMER WISENDANGER, ROY WEAR.

Halvorson's is Sold

The attractive home in the boulders at 1316 South Grade Road, built by Mr. and Mrs. J.H. Halvorson of SD, has just been sold to Mr. and Mrs. W.J. Chamberlain, who recently came here from Corvallis, Oregon. Sale was by Charlene Brown of Pierce Realty here.

Chamberlain is a Texan, she an Oregonian. He finished High School in LA, moved north where he received his BS in Forestry at Oregon State, and his MS in entomology. Later he received his Dr's degree at Stanford in 1931. He taught entomology for 40 years at Oregon State with time out for World Wars 1 and 2. During the first one he was a pilot, and in the 2nd he trained young men as mechanics. The Chamberlains have four children all married.

OPPORTUNITY!

For Two Licensed Real Estate Salesmen

WITH FIRM OVER 23 YEARS EXPERIENCE IN SAN DIEGO WE SUPPLY ALL SELLING AIDS

Call R. A. Garner

HUGH L. McCoy Co. 445-2655

The PRICES

are ALWAYS right!

DAILY FRESH EGGS

9 am. to 7 pm.

WINDMILL Drive-In

ADOBE HACIENDA EGG RANCH

Hwy. 80 — 3 mi. E. of Alpine

Milk

GOLDEN ARROW DAIRY

"...ask your neighbor!"

For Home Delivery call

home office 296-6205

WINNER OF 8 GOLD MEDALS AT THE STATE FAIR

Margaret Wheeler, popular checker at Florence's Market for some time has moved down to Santee with her family.

Teacher: "Johnny if you don't tell me who put that pin in my chair, I'll whip you."

Johnnie: "Go ahead; it won't equal what the boy would do to me if I tell on him."



HOMESICK?

Cheer up! For an amount you'll hardly miss, you can place a Long Distance call to those you do miss. And to them, nothing says you like your voice.



Pacific Telephone

PART OF THE NATION-WIDE BELL SYSTEM

TOP TALK

By Cynthia Irvine

Our Pequeno Riders Horse Show starts at 1 o'clock tomorrow at our new ring and be sure to come early. Trophies will be given for all events and ribbons through 10th place so plan on coming. Refreshments will be available too, so start saving your money. Entry fees are \$1. for non-members and all members who have not paid their annual dues. It is less if you have paid up as most members know. Bob Alcorn is going to be the judge and we are not sure who is going to be the announcer if we have one.

Everyone is welcome to come and practice in our ring this week and bring your brothers and sisters even if they don't have a horse. It is fun to watch too.

Sunday David Shortridge and I were out riding and we found a dead collie in the street. I knew it belonged to Zeiglers so

went in and told them and Ted came out and got it. I know how he felt and was so sorry for them.

Melody Earicks on came over to see us last week and she had her leg in a cast. She broke it skiing at Big Bear but can walk without crutches so it isn't too bad. She is the only one left here of her family as the rest of them are having a wonderful time in Perth, Australia where they will be for nearly two years. Melody is planning on getting married so didn't want to go.

Our Easter vacation was one of the best we have ever had with lots of work and fun too. David Shortridge came down from Long Beach and spent the week with us and Mama's sister and family came down on Tuesday so we all bundled up and went to Pine Valley and played in the snow. It was really beautiful and it snowed most of the time we were there. We took Duke and he thought the white stuff was to eat and he had a ball.

Our biggest project this past week was trying to get our ring finished. Friday Linda Rushing's dad brought over four loads of granite and we all helped to spread it. Then Mr. Mac, Alice Villa, David Weisbach and Mama put up the fence, and Dave Villa sawed all the posts off for us. It took all day and we are not finished yet but at least we can use it and we hope to have it painted before the show Saturday. And I want to thank everyone who has helped us so much to get this job finished.

Evelyn's BEAUTY SHOP

PERMANENTS FROM \$5.50 UP

Closed Tuesday 444-4294

2030 Crest Dr. Suncrest

Request Water Map

At a continued meeting Monday night, Alpine's fire commissioners explored more thoroughly on fire hydrants for the community. They have asked Rio SD MWD to supply a map showing all water lines and pressures so they may place hydrants on paper, then submit it with other data to fire underwriters in LA to determine a downward rate from 10, perhaps to 7 or 8. It might mean a 50% reduction in fire insurance.

This could be done without extra tax or bonds as money is on hand to be used, says secretary O.E. Palmer.

FORMER TEXANS MOVE HERE

Mr. and Mrs. J.B. Wade with their four children have taken a house on Homeward Way, off Victoria Dr., having come up from Lakeside where Wade is a cabinetmaker. Originally from Texas, they lived for some time in Tucson. They all like Alpine fine.

Larry Brogan, of Alpine Butane Co., says the cold spell has kept him running his tanker day and night to keep tanks of his users in Alpine and the back country filled with liquid gas.

Climate IS Famous

A.G. Winn, salesman with Mary Stevens Realty, Valley Center, who works out of the La Jolla office, lives in Encinitas, visited the Sun office Tuesday. He wanted some of the Sun's weather reports, maps and other data on the town with the famous climate, for, says Winn I've get many calls for a place with this type of climate so I wanted to be prepared with your data.

He subscribed to the Sun, confided that he might even buy land here because 'This part of the county is a bright future'. He taught school for 28 years in National City.

HAIG C. MERIGAN, D.D.S.

DENTIST

PHONE

Off. 444-2139

Res. 444-7619

203 Prescott St. El Cajon



The BONANZA WESTERN SHOP

HICKORY 4-0550

WESTERN WEAR

GUNS - LOADING - AMMO - TACK

LYLE & PAT WOLTERS

120 S. MAGNOLIA AVE. EL CAJON

ALPINE NURSING HOME

24-Hour Service

Est. 1956

IN QUIET, PEACEFUL SURROUNDINGS

Gives Homelike, Personal Care to Confused,

Forgetful or Senile Ladies

873 Arnold Way

445-3125

Alpine

DOUBLE TALK

By Cecile & Celeste Irvine

Our Easter Egg Hunt for Pequeno Riders was really swell and David Shortridge, Cynthia, Lynn Kinikin, David Weisbach, Susie Parsons and my sister and I won prizes. After the party we went riding to find Susie Parson's horse and Pat Coffin and Margaret Moran were riding Eileen Dun's horse Diablo when he ran away with them and they both fell off. Margaret had to spend one day in the hospital with a small brain concussion which was too bad but she is ok now and we are all so glad.

Sunday Daddy had to go over to the midget car races in back of Lutz garage and I went with him. We have never attended one of these races before and they are fun to watch. Loads of kids we know were there and Delores and Dorothy Moats told me they were leaving for Canada

soon. Their class had a going away party for them them too.

We were so happy when our cousins Peggy and Trudy Arndt came down to spend a few days with us but hated to have them go home so soon. Trudy gets to spend most of the summer with us and we all can hardly wait.

Pam Weisbach spent all of Easter vacation in La Jolla with her girl friend so missed our party but she had a wonderful time anyway.

We have a new club member Sharon Beck and she has an Arabian who is a good jumper so we are going to have some good competition at the show tomorrow.

Libby Wake is bringing down her dues as she wants to be a Pequeno Rider now.

Steve Wilcox got the cast off his arm last Friday.

Eileen Dun's sister Pat had a baby girl last week and they named her Mary Angelo.

Dorothy Rash's dachshund is going to have pups in two weeks.

Veronica Brown had to have her finger operated on and they didn't give her any novacane either.

Elaine Wilt spent one day up in the snow and had a good time except for one little accident. Some boys threw snowballs at her and she fell down and cut her hand and had to have some stitches taken in it.

Our school nurse Mrs. Ablett called Mama Wednesday with some sad news. Her nice quarter horse died of colic Sunday.

Glenview Feed Co.

HAY - FEED - VACCINES - ETC.
Poultry Equipment

DELIVERY IN ALPINE THURSDAYS

443-1310

13283 Hwy 80 at Los Coches



TROY WRAY



KEN VOSKA



850 EL CAJON BLVD.

CITY OF EL CAJON TELEPHONE 442-0201
(The Auto Capital of San Diego County)

OPEN EVENINGS - CLOSED SUNDAY (because it's Sunday)

TWO GOOD WAYS TO SAVE STILL MORE AT HATCH!

Troy Wray and Ken Voska are old timers with Hatch Chevrolet. The lowest-overhead-cost-per-car-dealers-of-them-all. Troy and Ken know Chevrolet cars and trucks and they know lots of folks in Alpine. Right now, during the big Hatch Expansion Sale, they can save you more money, give more trade-in allowance and work out easier terms for any new car and truck. And bring this ad to Troy or Ken for a special bonus.

Chevrolets - Chevelles
Chevy. II's - Corvairs
Corvettes

And



TRUCKS

SHOWBOAT FRIDAY

At 8 pm a week from tonight the curtain will rise on one of the most exciting evenings ever staged here, "Showboat", presented by the teacher's association and local Kiwanians. There will be dancing girls and a colossal bathing beauty contest. Last night the Kiwanis had its usual dinner in Fuller Hall, adjourned to the school for rehearsal, the last one to be next Thursday. "Remember, singing is fun, be there—don't limit your warbling to the showerbath", admonishes Carl Schweiss, chairman.



MAGNIFICENT VIEW FROM AL HOWE'S AIRPLANE AS HE FLEW AT ABOUT 10,000 FEET AFTER THE SNOW. IN FOREGROUND IS 6500 FOOT CUYAMACA PEAK. LANDMARK. WITH MTS. SAN

BUYS LAND FOR EXPANSION

One acre adjoining the Whitt Plumbing Co., South Marshall Road, has just been bought by them for future development of their business, reports Bill Brown of Pierce Realty here.

THE STORE



POWER TOOLS

IN EL CAJON

SOME OF THE FINEST IN HARDWARE

COMPLETE LINE OF GARDEN EQUIP.
COMPLETE LINE OF PAINTS
ALL HOUSEHOLD HARDWARE
COMPLETE LINE OF GIFTWARE



BUILDERS' HARDWARE



FIREPLACE EQUIPMENT



HARDWARE GIFTWARES

444-3129



SHOP SMITH



HOUSEWARES APPLIANCES

HOURS MON.-FRI. 8 A.M.-9 P.M.
SAT. 8 A.M. 6 P.M. SUN. 9 A.M.-5 P.M.

TURN OFF FREEWAY ON MAGNOLIA - 456 N.

Alpine Weather Records

Climate, Temperature and Rainfall

Prepared by C. Robert Elford
Weather Bureau Office, San Francisco, California.



Presented as a Public Service by the Alpine Sun

CLIMATE OF ALPINE, CALIFORNIA

Alpine is about 25 miles from the ocean in hilly country sloping gradually upward to the east. The elevation ranges from around 1400 to 2000 feet. Viejas Mountain, 4224 feet, rises about 5 miles northeast of the city. The crest of the mountains, around 6000 feet, is 15 to 20 miles farther east. El Capitan reservoir is about 5 miles northwest and 1000 feet lower.

The southerly latitude of Alpine, combined with its relative proximity to the ocean, results in an equable temperature regime. The average maximum during July, the warmest month, is just over 90°, while the average minimum during January, the coldest month is about 37°. High temperatures during the summer, however, occasionally reach well above 100°, a record 110° having been recorded in September, 1955. Even in winter it is possible to have maximums in the 80s. Readings of 90° or higher have been recorded 60 days per year, on the average. The minimum has dropped to as low as 18° in January of 1937, and sub-freezing temperatures have been reported at one time or another during each month from October through April. On the average there are 27 days per year with temperatures of 32°

or below. There have been occasions when extreme temperature conditions have persisted for long periods. In July, 1959, for example, the maximum reached 90° or higher on 28 days. At the other extreme was January, 1937, when freezing temperatures were recorded on 22 days.

The average annual precipitation amounts to 19.82 inches, but only 0.38 inch of this falls during the months of June, July, and August. More than 16 inches falls from December through April. A total of more than 6 inches of rainfall in a 24-hour period has been reported. This fell within a 13-hour period, and consideration of other available data indicates that amounts up to 7.50 inches in 24 hours might be expected as often as once in 100 years. Snow is infrequent, although it has been reported on several occasions. Hail falls at times in connection with thundershowers.

Clear skies are the rule during much of the year. Averages show about 254 days to be clear, 51 partly cloudy, and only 60 cloudy.

While relative humidity records are not available, a study of other nearby reports would suggest that readings

Please see back page.

U. S. DEPARTMENT OF COMMERCE, WEATHER BUREAU
IN COOPERATION WITH THE ALPINE SUN
CLIMATOGRAPHY OF THE UNITED STATES NO. 20 - 4
CLIMATOLOGICAL SUMMARY

LATITUDE 32° 50' N
LONGITUDE 118° 47' W
ELEV. (GROUND): 1735 feet

STATION: Alpine, California.

MEANS AND EXTREMES FOR PERIOD 1935-1945, 1952-1959

Month	Temperature (°F)				Mean degree days **	Precipitation Totals (Inches)				Mean number of days							
	Means		Extremes			Year	Mean	Greatest daily	Year	Maximum monthly	Year	Greatest daily	Year	Precip. 10 inch or more			
	Daily	Minimum	Record	Highest											Record	Lowest	Year
(a)	17	17	17	7	17	18	18	18	18	18	18	18	18	17			
Jan.	63.1	37.2	50.2	86	1937	3.09	3.03	1943	T	1937	18	1937	6	17			
Feb.	63.3	37.5	50.4	85	1957+	4.29	6.03	1937	T	1944+	T	1944	6	17			
Mar.	66.3	39.0	52.7	95	1953	3.78	2.50	1943	0	1944+	0	1944	5	0			
Apr.	69.5	42.3	55.9	95	1958	2.13	2.46	1940	T	1938	T	1938	5	0			
May	75.1	45.8	60.5	102	1956	0.58	1.15	1955	0	1959	0	1959	2	0			
Jun.	82.4	48.7	65.6	105	1957	0.12	0.53	1937	0	1959	0	1959	* 2	0			
Jul.	90.7	55.6	73.2	109	1957	0.07	0.21	1937	0	1959	0	1959	* *	0			
Aug.	89.7	56.1	72.9	107	1956	0.19	1.25	1945	0	1959	0	1959	* *	0			
Sep.	88.1	53.7	70.9	110	1955	0.43	1.79	1939	0	1959	0	1959	* *	0			
Oct.	79.9	47.7	63.8	103	1958+	0.81	1.24	1957	0	1959	0	1959	2	0			
Nov.	73.2	41.7	57.5	92	1956	1.03	3.02	1944	0	1959	0	1959	2	0			
Dec.	67.0	39.3	53.2	90	1938	3.30	4.43	1940	T	1959	T	1959	5	0			
Year	75.7	55.5	60.6	110	1955	19.82	6.03	Feb. 1937	T	Dec. 1959	T	Dec. 1959	32	0			

(a) Average length of record, years.

T Trace, an amount too small to measure.

+ Also on earlier dates, months, or years.

* Less than one half. ** Base 65° F (Estimated).

Total Precipitation (Inches)

Year	Jan.	Feb.	Mar.	Apr.	May	June	July	Aug.	Sept.	Oct.	Nov.	Dec.	Ann'l
1935	4.05	5.10	3.01	2.24	0.23	0.0	T	0.82	0.95	0.21	0.22	1.34	18.17
1936	0.52	9.02	3.53	1.56	0.44	T	0.33	0.19	0	1.94	0.17	8.27	25.97
1937	5.30	11.66	4.84	1.27	1.05	0.54	0.21	T	0	0	0.19	2.22	27.28
1938	3.15	4.91	8.25	1.52	1.04	0	0.02	0.02	0	0.86	0.04	7.16	26.97
1939	3.60	3.28	2.87	0.85	0.29	0	T	0.02	4.91	0.91	0.78	0.77	18.28
1940	4.39	4.83	1.26	3.24	T	0	0	0	0.11	1.98	0.91	10.31	27.03
1941	1.78	4.76	8.66	8.01	0.62	0.05	0.12	0.08	0.50	3.19	1.45	4.70	33.92
1942	0.36	2.22	2.78	3.18	0.06	0	0	T	0	0.67	0.58	1.95	11.80
1943	6.82	2.51	4.72	3.35	0.11	0.45	0	0.01	0.06	0.72	0.05	5.51	24.31
1944	2.01	7.31	2.02	1.53	0.30	0.17	0	T	0	0.03	6.78	1.35	21.50
1945	0.76	3.86	6.88	0.49	0.07	0.34	0.04	1.98	0.80	0.15	0.75	8.25	24.37
1952	---	---	---	---	---	---	---	---	---	0	3.70	3.02	---
1953	1.13	1.50	1.98	1.25	0.91	T	0.04	0	0	0.96	0.24	8.01	---
1954	5.40	1.95	7.66	0.18	0.19	0.09	0.30	T	0	0.46	0.94	17.17	---
1955	6.27	1.96	0.80	0.47	2.52	0	0.11	0.16	0	0.03	1.07	1.81	13.22
1956	3.19	1.19	0	2.88	0.12	0	0.06	0	0	0.39	0	0.44	8.27
1957	7.18	0.82	1.46	1.59	2.13	0.43	0	0.02	0	3.86	0.91	1.72	20.12
1958	1.33	3.89	7.23	4.7	0.36	T	0	0.15	0.33	0.50	0.50	0.07	18.18
1959	0.30	6.39	0.03	0.47	0.02	0	T	T	T	0.40	0.0	2.60	10.27
1960	3.58	1.66	2.01	.89	.00	.00	.06	.0	.02	.20	2.22	Tr.	13.78
1961	1.03	0.22	2.35	0	T	0.02	0	0.36	0.03	0.62	0.97	2.22	7.82
1962	3.45	3.35	1.93	0	1.39	.15	0	0	.08	.05	T	.60	12.98
1963	.72	2.90	1.98	1.63	0	.10	0	.09	2.50	.67	2.22	.31	13.1

* Not used in Means & Extremes.

Average Temperature (°F)

Year	Jan.	Feb.	Mar.	Apr.	May	June	July	Aug.	Sept.	Oct.	Nov.	Dec.	Ann'l
1935	---	52.7	49.6	57.4	59.4	66.0	72.8	75.0	71.0	62.2	55.0	53.4	---
1936	53.0	50.7	55.0	57.4	62.3	68.4	75.2	74.6	70.6	64.4	60.4	52.0	62.0
1937	40.7	49.0	57.8	55.1	60.2	64.6	72.6	73.8	73.4	66.2	56.7	54.4	59.9
1938	52.5	49.9	50.0	55.2	59.4	64.4	70.7	73.0	73.7	61.6	55.1	53.6	59.9
1939	48.2	43.8	50.7	55.2	58.9	64.2	70.2	72.4	69.4	61.8	57.6	55.5	59.2
1940	50.9	50.2	53.1	55.4	61.4	63.8	69.6	69.3	66.0	63.7	54.8	54.4	59.4
1941	48.2	51.0	51.6	51.5	61.5	61.0	69.8	67.5	62.0	59.5	56.5	48.2	57.2
1942	49.6	46.2	49.2	50.8	56.1	62.5	71.2	69.6	65.2	59.6	55.6	50.8	57.2
1943	48.6	50.2	50.6	53.2	60.0	61.8	68.6	69.6	71.3	61.6	57.5	48.0	58.4
1944	47.1	44.1	48.2	49.8	56.3	57.0	---	---	---	---	---	---	---
1952	---	---	---	---	---	---	---	---	---	68.8	54.2	50.8	---
1953	56.1	52.0	54.1	55.1	58.9	65.6	75.7	72.6	70.9	65.5	59.3	51.8	61.5
1954	48.7	57.3	51.5	58.4	62.3	66.6	77.6	71.4	72.4	65.5	60.9	52.2	62.0
1955	47.5	50.6	55.9	56.8	60.3	66.4	78.0	78.0	75.0	63.6	57.3	52.0	61.3
1956	52.2	47.4	55.3	55.7	63.2	69.6	71.0	71.0	76.8	61.6	60.6	54.1	61.8
1957	49.1	55.7	55.0	57.4	59.7	72.3	76.5	75.9	72.0	61.3	53.9	55.2	62.0
1958	52.3	54.7	51.6	59.2	65.8	68.1	72.0	76.6	75.1	70.1	58.2	60.6	63.7
1959	57.7	51.9	61.7	64.5	61.9	72.1	79.5	76.2	71.9	69.2	64.1	56.4	65.6
* 1960	50.0	51.7	59.2	62.0	65.6	73.0	79.8	75.6	77.8	65.7	57.3	53.4	64.3
* 1961	57.8	56.7	54.7	61.6	60.5	71.4	74.6	75.4	70.2	64.5	55.6	51.0	62.8
* 1962	51.2	48.4	48.6	61.1	58.4	65.2	70.6	75.6	71.4	63.6	56.8	52.8	60.3
* 1963	47.7	57.3	51.9	53.4	59.9	62.6	71.6	73.1	76.7	66.9	57.2	55.7	61.2

STATION HISTORY

The first Weather Bureau records for Alpine were taken between February 1, 1935, and August 31, 1945, by Harold L. Flegal, at his vineyard about $\frac{1}{2}$ mile southwest of the post-office. The elevation was given as 1900. The instruments for this station were furnished by the Chamber of Commerce. The more recent data used in this summary were obtained from a point $\frac{1}{2}$ mile west of the post-office at an elevation of 1700. The records at this location were started on October 2, 1952, by Ernest W. Wright and were continued to December 1958. Here the shelter was still the property of the Chamber of Commerce, but the thermometers and rain gage were furnished by the Weather Bureau.

Beginning in December 1958 the station has been operated by the Fire Department, with Robert Fey as the observer. The location is $\frac{1}{2}$ mile west of the postoffice at an elevation of 1735 feet.

There are also records

available from two other locations in the area. From May 1951 to Oct. 1952 observers were H.E. Aston and Marion C. Aston. Their station was about 1.2 miles north northeast of the postoffice, at 2260 feet. R.E. Gastil took observations from January 1950 to May 1951, but we have no information concerning the location and exposure of this station. Because of the higher elevation of the Aston station and doubt about the location of Gastil's we have not included these records in this summary. The wisdom of combining the Flegal and Wright records might be debated, but it has been done in order to provide a long enough record to make a useful summary.

Most of the Alpine records have been published currently in the California section of the Weather Bureau's Climatological Data. The original manuscript copies, for the most part, are on file in the Weather Bureau Office in San Francisco.

More about Alpine Climate from Page One.

during the summer would drop into the 30's most afternoons and rise to the 60's at night. Winter readings are somewhat higher. Occasionally very dry conditions are reported when east and northeast winds prevail over southern California. These situations may develop at any time, dropping humidities to 10% or fewer, but they are most likely during the late fall or early winter months.

The prevailing wind direction is from the southwest, northwest and west winds are also quite common. While the average speed is probably quite light there may be occasional strong winds associated with thunderstorms or with the more widespread storms of winter. Also, the infrequent east winds may

at times reach great enough speeds to cause slight local damage.

The last 32° temperature of the spring occurs early in April, on the average, while the first freezing temperature in the fall can be expected near the end of November, giving the average length of the growing season of about 235 days.



GORGONIAO AND SAN ANTONIO, 'OLD BALDY' IN FAR DISTANCE ABOUT 70 MILES AWAY.

When outgoings exceed your income, your upkeep is your downfall.

KICK-OFF BARBECUE SUNDAY

A barbecue to kick-off pre-sale ticket contests for the Eastern SD County Fair will be held Sunday, April 5, at Frontier Town from noon till 6. Admission is \$2. for adults, \$1.50 for children 12 and under, and free under 6. Admission includes a deep-pit barbecue beef dinner, live entertainment and other Frontier Town attractions. Tickets are available through participating organizations, the EC Jaycee office, or at the gate.

DON'T SKIP THESE DATES

There is not much to write about two important dates in your future: Friday, April 10th is county tax deadline and Wednesday the 15th is for income tax. Cough up on time, or else--ugh--penalties!

A good front can't last long without a good backing.



Delicious

DATE CONFECTION



Pure & Natural

Quick Alkaline Nourishment - Digests Easily

DATES STUFFED WITH HONEY, FRUIT AND NUTS

Rolled in Pure Dextrose

No Sugar or Preservatives

Nature's Perfect Energy Food

SEND TODAY, ONLY \$1. A POUND POSTPAID IN CALIF

Roush Nutrition

(45 Years in Los Angeles)

1776 El Camino Real, Unit B San Carlos, Calif. 442

IF YOU WOULD VOTE **New Owners at Cafe**

Next Thursday the 9th is deadline for signing the great register of voters in this county. So if you wish to cast your ballot in the primary election on June 2, then get busy and register-- if you are not qualified-- or have just become 21.

Deputy here is Mrs. Harry Colby, 1546 Tavern Road, but call 445-2888 to be sure she is in.

Lynn and Dave Campbell with Bill and Sarah Brooke,



THESE THREE CAME FROM MT. LAGUNA AIR FORCE BASE TO HELP SARAH CLEAR FRONT OF CAFE FOR BUSINESS.

have taken over Hilltop Cafe in Guatay, a popular eating place on Hwy 80. 'We are doing home cooking which is making a real hit,' says Sarah, who used to live in Alpine, 'and we are glad to be back in the Mt. Empire'

SUBSCRIBE. STILL \$2 YEAR.

FOR PERSONAL

SERVICE

Call

N.M. GRIECO, Realtor

463-6917

8300 University, La Mesa

EL CAJON AWNING & MANUFACTURING CO.

845 El Cajon Boulevard, El Cajon, Calif.
Tel. 442-3301

Our Factory To You, State Approved

The Californian

AWNINGS • CABANAS • SCREENED ENCLOSURES
for
Mobile Homes • Patios • Residences
• Commercial

COME IN AND SEE OUR
SHOW ROOM DISPLAY



Sandy's Feed Store



Albers & Universal Feed

Hay - Feed - Seeds - Chick & Pet Supplies

FREE DELIVERY

Hours 8 a.m. to 6 p.m.

Ellen & Warren Sandy

444-7273

El Cajon

907 E. Washington

LOTS OF FUN WAS HAD BY ALL. INCLUDING PRES. BOB BROWN AT RIGHT; SECRETARY-TREASURER LARRY WILCOX, MIDDLE, AND ALL THE WAY FROM EL CENTRO, JACK MCCONNELL DRIVERS WERE FROM ALL OVER SOUTHLAND.



OREGONIAN IS NAMED

Joseph F. Sinnott, president, SD Gas & Electric Co., has just appointed Thos. M. Sagar, former assistant in the SD County district Attorney's office, as a staff lawyer for the firm. He is graduate of SD State and a 10-year Marine veteran, having seen service in WW2 and Korea. He also went to Pacific U at Cottage Grove, Oregon.

Road Oiling

Fred D.

RUSHING

GRADING & EQUIPMENT RENTAL

Backhoe work

Building Sites, Roads
Driveways, Trenching

445-2214

Alpine, Cal.

PARIS MORTUARY

Since 1943

Helpfulness to the bereaved family

* * * *

We relieve you of every responsibility

* * * *

Spare you of every detail

* * * *

Anticipate every need

* * * *

Observe every wish

El Cajon's

Locally

Owned and

Operated

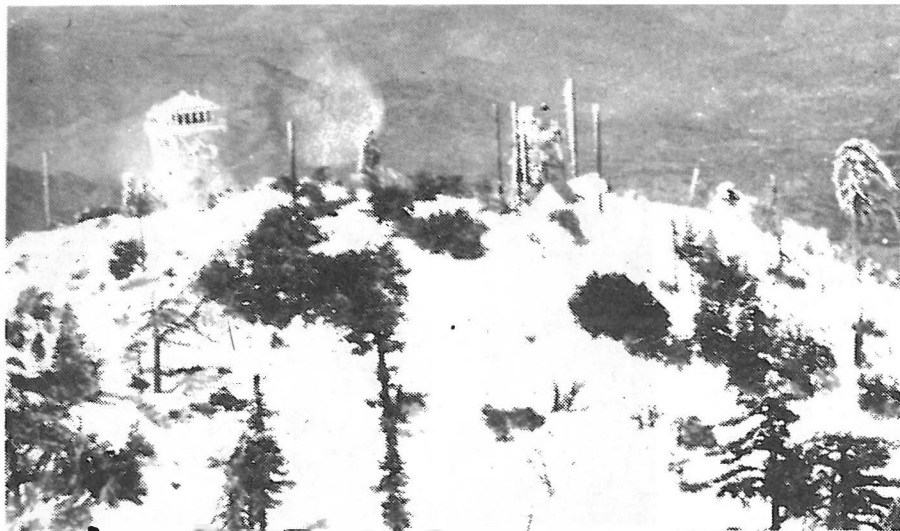
Funeral Home

Milt Paris, Owner

374 N. MAGNOLIA

442-4411

EL CAJON



"Why are long skirts like prohibition?"
 "Because they cover up a lot of old familiar joints."

Pierce Realty Co

BILL BROWN, Mgr.

Ranches, Homes,
 Acreage, Income

445-2631 Exs. 445-3035

Alpine CONVALESCENT Center

STATE LICENSED

Conscientious Service
 Balanced Meals
 Congenial Atmosphere

24-HOUR NURSING SERVICE
 REASONABLE RATES
 DEPENDING ON CARE REQUIRED

P.O. Box 397

2120 Hwy 80 445-2771

WINTER WONDERLAND IS INSUFFICIENT DESCRIPTION OF CUYAMACA PEAK. FROZEN AT 6500 FEET ALTITUDE. AS SEEN FROM EDITOR IRVINE'S PLANE AS HE FLEW OVER THE LAND-MARK WITH AL SMITH. ALPINE REALTOR.

RETIRED SOCIAL WORKER HERE

Charlene Brown of Pierce Realty here, has just rented to Mrs. Helen McCall of SD the attractive 2-bedroom home on Willows Road owned by Mr. and Mrs. Montague Brabazon. Mrs. McCall is a retired social worker, is moving to Alpine for her health

"AFTER ALL," said the indulgent mother, "he's only a boy, and boys will sow their wild oats."

"Yes," replied the boy's father, "I know. But I wouldn't mind if he didn't mix so much rye with it."

John Gault

ALPINE SALES REPRESENTATIVE

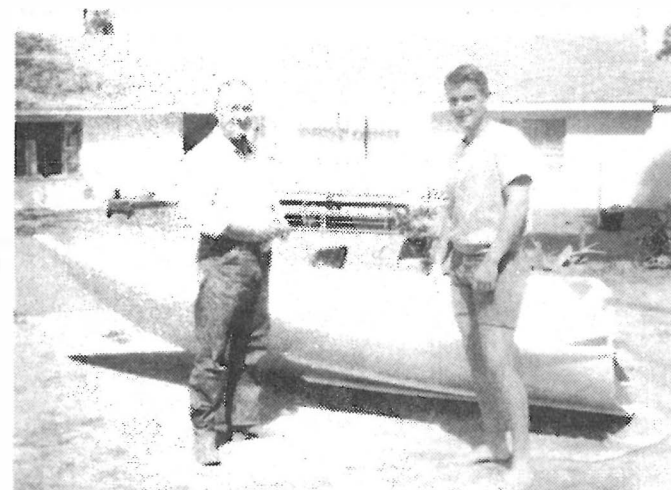
Dodge Darts & Trucks

NEW & USED

WITH CARL BURGER DODGE

445-3653 463-9321

JACK BERG
 AND SON
 WITH BOAT
 HE JUST
 FINISHED.



YOUNG BERG TO SEE EUROPE

On June 6, Joe Berg, 19, son of Mr. and Mrs. Jack Berg, 1711 Tavern Road, leaves with a boy pal for NY by plane to fly to Europe on their vacation. He is presently an insurance major at SD State, plans to follow his father in that profession. At the factory of Volkswagen in Germany he will pick up a new car, drive it around, then sail for NY and drive home.

The photo shows the father and son with the unique boat Joe just finished building with a pal, Jim Grantham which they have been working on at odd times for four years. He launched it on Saturday and it really floats!

GAS

For Trailer or Home
 Prompt, Courteous
 Service
 Alpine Butane Co.
444-3173

M.H. Bredesen, D.C

GENERAL PRACTICE

Body Alignment

Colonics

SUNNY KNOLLS RANCH

H15-2321

SHELL STATION

Complete Service

Tires & Accessories

Ralph & Lavon Becker

We Give S & H Green Stamps

4007 Hwy 80 445-9561

FRONT END ALIGNMENT

Lutz's Garage

SERVING ALPINE & MT. EMPIRE

Complete Motor Service

24-HOUR TOWING

Wheel Balancing

Automatic Transmission

HAROLD, GEORGE & LARRY

445-2967

Hwy 80 at Tavern Rd., Alpine

H.V. OSWALD

Graveside services were Monday at Ft. Rosecrans National Cemetery for Herbert V. Oswald, 61, who died Thursday in a SD hospital.

He was a native of NY, lived at 1467 Louise Dr., had been in the area 26 years, was last employed as a gardener for Grossmont Union HS district.

A Navy Veteran of WW2, he retired from the service after 24 years. He was a member of EC Fleet Reserve Assn., Branch 47.

He is survived by his widow, Lucienne Suzanne; two sisters, Mrs. Ethel Sweet and Mrs. Marian Sayer; and a brother, Frank all of NY.

Paris Mortuary handled arrangements.

Kip's Cafe

FINE CHINESE FOOD

Delicious, Oriental, Exotic
ORDERS TO GO. ALSO HOME DELIVERY
Closed Monday - Free Parking
1058 E Main, El Cajon, 442-1211

KARI JEWELERS

All Kinds of Watches & Clocks
Expertly Repaired
Complicated Timepieces
Including Electric Watches
DIAMOND SETTING & ENGRAVING
All Work Guaranteed
444-7304
116 Prescott El Cajon

For Your Health Foods, Vitamins And Special Diets
Purchase With Safety And Confidence At The

VALLEY HEALTH FOOD STORE

IN BUSINESS SINCE 1950

W. L. HOUGHTON, OWNER

The address is still 133 Prescott, El Cajon, HI4-8447

NEW HIGH ENERGY FOOD

With physical fitness and abounding energy in mind, Dr. Guy E. Roush, who has been in nutrition work for 45 years at Los Angeles, but now of San Carlos, has come out with a new and delectable product, a delicious date confection which is being advertised in the Sun today.

As the doctor, who has lived about all of his life on natural, live foods says: 'This is a combination of dates stuffed with nuts and other high nutrients, rolled in pure dextrose and yielding quick alkaline nourishment, and is most easily digested'.

Note- I have known Dr. Roush-- a subscriber to the Sun-- for over 30 years, and his quality natural foods have been advertised in my magazine Let's Live, at Hollywood, since it started. We have used his famous soya products (anyone who has eaten Alice Irvine's famous soy waffles, will attest to this), ever since he started; also his breads, cookies and so on. We do not hesitate to approve, but heartily urge you to use his new date confection, a safe sweet for the kiddies, too.-CI

WIZARD OF OZ AUDITIONS

Tomorrow at 1 in Balboa Park Bowl, children's roles for the forthcoming Wizard of Oz at Starlight this year, will be held, says Robt. S. Pyber, general director. 'Bring your own music' he says 'and we will have a piano accompanist on hand'.

EVERYTHING
IS MICRO
ABOUT THE
LITTLE
RACETRACK.
EVEN THE
BLEACHERS.
SEATING
ABOUT 100.
THESE
VISITORS
ENJOYED
EVENTS
SUNDAY



JONES ENTERS FIRE RACE

The name of William H. Jones (Corky), has been entered for fire commissioner in the balloting Tuesday next week. This makes only two that have signified their intentions to the Sun that they will run, the other being Bert C. Fuller.

Remember that no names will be printed on the ballot, but must be written in in full as shown above. Voting is from 11 to 7, at the fire house, 1810 Hwy 80. Two vacancies will be filled. (Sun for 3-20).

We do not know why, but all the Suns were sold out at three spots in Alpine last issue. Thanks folks!

CAKES & PASTRIES

For Weddings, Birthdays
and Special Occasions

TASTY BAKE SHOP

144 E. MAIN 444-3686

Nutrition Center

Your Health Food Store
162 E. Main El Cajon 442-7212
Mr. & Mrs. H.A. Gillies
Complete Line of Health Foods,
Special Diet Foods - Vitamins,
Minerals and Supplements
Open Daily Except Sunday
9:30 to 6:00, Friday to 8:00

WE GIVE GREEN STAMPS



Hilltop Cafe

Home Cooked Meals & Pastry

Open 24 Hours

95¢ SPECIALS EVERY DAY!

Hwy 80

GUATAY, CALIF.

GR. 3-8512

Hatch in Expansion

Since opening in Nov. 1955, Hatch Chevrolet has had two growth expansions and a third got underway when Clarke Hatch, owner of this popular agency that serves the back country, broke ground for a \$100,000. building program. It was necessitated by a tripling of the business since its inception, says Hatch.

The program includes a 7900 sq. ft. 2-story building for parts, accessories and cashier's office. Thus it triples its floor space. Present showroom and office will be remodeled with three sales offices, manager's office and customer reception room added.

Art Decker is architect and Fred Hunt is builder. See photos.

A.J. CINELLI

Services are being held today in Paris Mortuary Chapel for August Joseph Cinelli, 67, of 1301 W.

Water Wells PUMPS

SALES SERVICE

Water Wells Drilled

STOCKTON PUMP & MACHINE

311 N. 2nd, El Cajon, HI4-2672

NOW!

YOU CAN GET YOUR CAR WAXED

WHEN IT'S WASHED

MAIN STREET

CAR WASH

OPEN DAILY 8:30 TO 5 PM

111 S. FIRST AT MAIN

El Cajon

HJ4-1641



FIRST WELD ON TELESCOPIC STANDARD FOR HUGE TEXACO SIGN 55 FEET OVER NEW BOB WILSON STATION. HE HAS TWO MORE TO MAKE. THEN GOES TO SECOND STANDARD FARTHER BACK. FOR SAME OPERATION. RAISING OF SIGN IS BIGGEST TASK. BOB'S NEW STATION, NEARING COMPLETION, IS A FINE ADDITION TO BUSINESS AREA.

Victoria Dr., who died Tuesday in a LM hospital. The Rev. J.C. Arnold of First Southern Baptist Church is officiating. Interment is in Alpine Cemetery.

He was a native of Italy, came to the US when 11, had lived here seven years, retiring as a machinist in Kalamazoo, Mich.

Survivors besides his widow Blendeena M., are a daughter, Joann Martinez, of Alamo, Calif.; two stepsons, Dale Ickes of Van Nuys and Max Ickes of Kalamazoo; two sisters and a brother in Italy, and 10 grandchildren.

SUBSCRIBE, STILL \$2 A YEAR

Chronicle Expands

'Dave & Naomi Woodruff, editors and publishers of the Mt. Empire Chronicle, now in its fourth successful year at Boulevard, have come out with an added column, making it five wide, and with 12 meaty pages, full of ads, too.

They have held a unique position for some time, doing all typesetting by hand, but it looks now like they have a linotype for this task. The paper is in yellow and green, looks fine.

Note- In their masthead they say 'The Empire's ONLY newspaper published within the Empire', making them and the Alpine Sun, the only two papers actually printed within the back country. Congratulations

OUR SLIP WAS SHOWING!

In last issue somehow-- we have no alibi-- the Sun printed a classified ad for our friend Hugh L. McCoy, the realtor, who wanted to buy a jack pump for a deep well. It went under 'For Sale', so please note this-- if you have one for sale, give Hugh a ring, 445-2656 after 6 pm. So Sorry!

THE SUCCESSFUL MAN has a wife who tells him what to do, and a secretary who does it.



Alpine Pharmacy
Rexall

A Complete Family Drugstore
WE GIVE S & H GREEN STAMPS
2223 Hwy 80 445-2488

2ND BIRTHDAY FOR WWI VETS

Monday noon Mt. Barracks 2716 Veterans of WW1, and its Auxiliary will observe their second birthday with a potluck luncheon in Fuller Hall.

EC Valley Barracks and Auxiliary 573 are invited guests as well as dignitaries from other posts. The regular meeting will be conducted after, with Cdr. W.W. Gamble in charge, President Esther F. Francisco, presiding at the Auxiliary.

TV Service

BLACK & WHITE & COLOR
40 YEARS IN ELECTRONICS

Dependable Service
Honest Prices
Quality Parts

445-3885

GEORGE LENGBRIDGE

"That's My Bank!"

First National Bank

OF SAN DIEGO

Member Federal Deposit Insurance Corporation

1402 EAST MAIN ST., EL CAJON
W. LEROY BOOTH, MANAGER

MICROCAR STORY From 1

and events will be run about every two weeks', says Wilcox. Honorary members who have aided are Corky Jones, Harold and George Lutz and Fred Rushing. Drivers came from as far as Burbank, and 18 cars were entered. See photos inside..

"JUST IMAGINE!" exclaimed the proud mother. "They've promoted our Tommy for hitting that mean old sergeant. They've made him a court martial!"

Dr. Gertrude T. Ryder
OPTOMETRIST
175 N. MAGNOLIA
El Cajon, California
444-9012

JEWELER - WATCHMAKER
EXPERT WATCH REPAIRS
445-2717

Watch Sick? See Pick!

LOUIS PICK
PHONE
WITH GINDY'S ACTIVE SPORTSWEAR
2502 Hwy 80, Alpine (Just East of Dinosaur Park)

Stop At
DON DIEGO'S
Mexican & American Food
443-2814
Orders to take out
HOSTS - PAULINE AND DEWEY
KEG & BOTTLE BEER - WINES
OPEN DAILY TO 9 PM
FRIDAY & SAT TO 3 AM
13675 Hwy 80 Johnstown

 **Don's AUTO SERVICE**
WE GIVE S & H GREEN STAMPS
2139 Highway 80 **445-2132**

BONEY STORY From Page 1

We need them, right enough, but we need outside money and we need it now! One way to get 'new' money is for the Supervisors to



provide effective, worthwhile support for year-around tourist industry, which brings in \$168 million.

Boney, 49, has lived here 24 years, is a Texan, started out with one small market, recently sold the chain of 128 Speedee Marts. He is married, has six children, makes his home in LM.

Boney and Fuller paid a visit to the Sun office Tuesday while looking over Alpine, picked up some data including the Sun's new weather summary, maps yellow pages and Alpine folders for study in his plans to help this area (2nd district) if elected in June.

EVERYTHING IS ON the up and up these days—wages, prices, and satellites!

Classified

30¢ PER LINE PER TIME. CASH ONLY.
COUNT SIX WORDS TO EACH LINE. MAIL
TO THE SUN, ALPINE, CALIF. CASH.

FOR SALE, MISCELLANEOUS

EXCELLENT ALFALFA HAY, \$48 TON.
YOU PICK UP. 445-2394.

HELP WANTED

SATURDAY & PART TIME WORK.
SEN. HIGH BOY. RANCHO VIEJAS
262-8624.

WANTED

JACK PUMP. MOTOR & PUMP FOR
DEEP WELL. CALL MCCOY. 445-2656
AFTER 6.

BUSINESS AIDS

BUSINESS CARDS, ONLY \$5.00 PER
1000. DE LUXE RAISED LETTERS
EMBOSSER. POSTPAID ANYWHERE.
PLEASE ADD 22¢ TAX. THE SUN
ALPINE, CALIF.

SEPTIC TANKS CLEANED

MODERN SERVICE. 444-6197.

ALPINE CLEANERS & LAUNDRY

2251 HWY 80, OPP. FLORENCE'S
MARKET. 445-4083. IN ADDITION
TO REGULAR DRY CLEANING &
PRESSING. WE GIVE YOU COIN OP
TYPE CLEANING. WITH SPOTTING.
NO EXTRA CHARGE. 8 LBS. \$2.
FLUFF DRY LAUNDRY. 12¢ PER
LB. WE FURNISH SOAP & BLEACH.
WET WASH LAUNDRY AT 6¢ PER
LB. ALSO SHAG RUGS & DRAPES.

WANTED TO RENT

2 BEDROOM COTTAGE IN ALPINE
OR JAPATUL VALLEY AREA.
CALL AT 2-9371.

MONEY TO LOAN

SOUTHLAND FINANCE COMPANY
411 BDWAY, SD. 234-3461.

LISTINGS WANTED

DO YOU NEED A LOAN? ON REAL
ESTATE, OR SELL YOUR TRUST
DEED. CALL DON BATES, 445-2537.

Don't part with your illusions. When
they are gone you may still exist, but
you have ceased to live.

SPECIAL NOTICES

RUTH BURDETT. PIANO LESSONS
HI 5-2877

EXPERT CARPENTER. HOME BLDR.
CABINET MAKER. ALTERATIONS.
ADDITIONS. 30 YRS EXP. REAS.
RATES. RICHARD C. LANE. 445-3740

'Z 86E-2 IH
'SNIT770C GEN '9N1SHOENR0H

LET MAC HAUL YOUR RUBBISH AND
GARBAGE. 445-2955 BETWEEN 5-6 PM

ALPINE APPLIANCE SALES & SERVICE
ALL HOUSEHOLD & COMMERCIAL AP-
PLIANCES & REFRIGERATION.
EXPERT TV REPAIR SERVICE.
445-2157. AFTER 7 PM 445-4194.

CUSTOM TRACTOR WORK. REASONABLE
RATES. DAYS 444-6134, NIGHTS,
445-2463. (4-17)

NEW HOME CONSTRUCTION

OVER 16,000 HARMONY HOMES IN
SO. CALIF. APPROVED BY OVER 70
LENDING INSTITUTIONS. LET US
SHOW YOU WHY. HO9-9187 OR
ZENITH 7-0166. (TF)
LEVELON BUILDERS, INC.

RAINFALL CAME UP!

Alpine's weatherman at
the fire station, Robt. Fey
reveals that to date 13.55
inches have fallen. Ac-
cording to the Lindberg
Field Bureau, Alpine's
normal is 19.82 at this
time, which makes it look
pretty fine for this area.

Rite Way Window Cleaners

445-2338

Store, Janitor Service
Residence, New Construction
Free Estimates

H. W. I & DOROTHY SMALL
Rt. 1, Box 25K Alpine

Alpine's Fine Weather

FROM OFFICIAL US STATION HERE

HIGH 83, AVE HIGH 67
LOW 34, AVE LOW 42
RAIN 3.48, SEA. 13.55

ELEV. 2000 FT. POPULATION 3258
WHERE THE SUNSHINE SPENDS THE YEAR

**JEANETTE C. HINKLE
Real Estate & Insurance**

445-2502

2105 HWY 80 ALPINE

**LISTINGS WANTED
SMITH REALTY**

Lillian Barrett, Sales Mgr.

2251 1/2 Alpine
445-2670 469-0013

MRS. ROWAN VISITS SON

Back from Santa Barbara is Mrs. Ed Rowan and son Timmy, of Acacia Lane, where they visited son Bob. He is attending Brooks College of Photography where he is making fine headway. Bob showed them the town with its old mission, also made the trip to Solvang, famous Danish village in beautiful Santa Ynez Valley.

MIDDLE AGE is when a guy keeps turning off lights for economical reasons rather than romantic reasons.



NEW GMC
Pickups \$1988

AT
BALLANTYNE BUICK

442-6671

Over 40 Years of Quality Service

300 El Cajon Blvd.

El Cajon